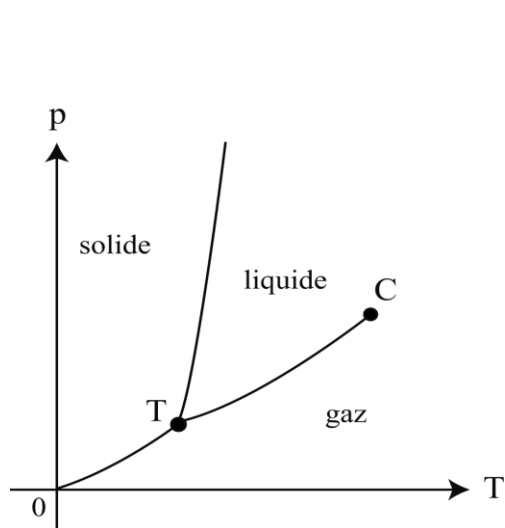
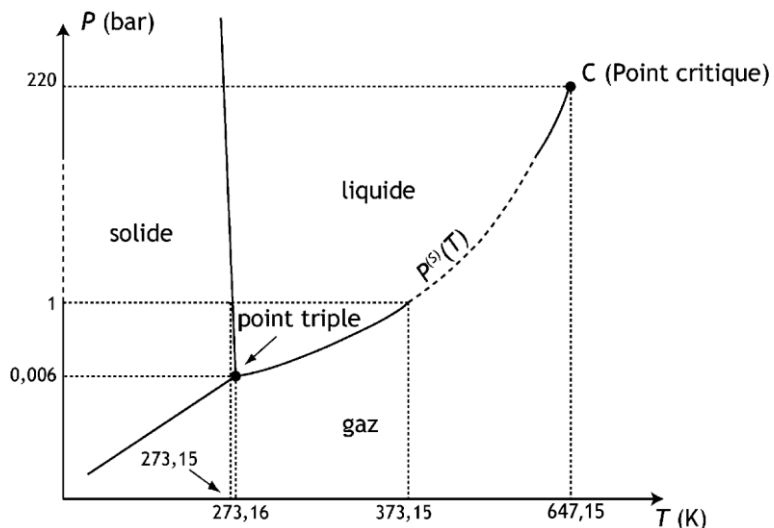


◇ *description*

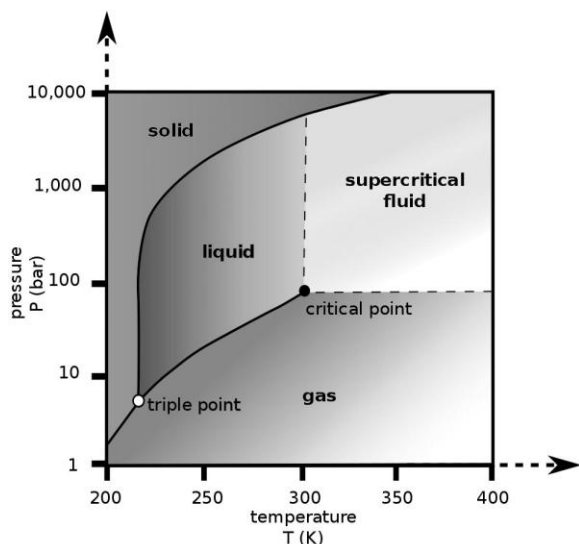


cas général



cas particulier de l'eau

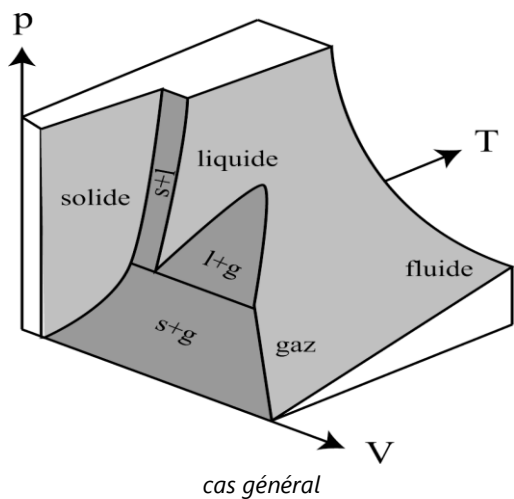
◇ *fluide supercritique : cas du dioxyde de carbone*



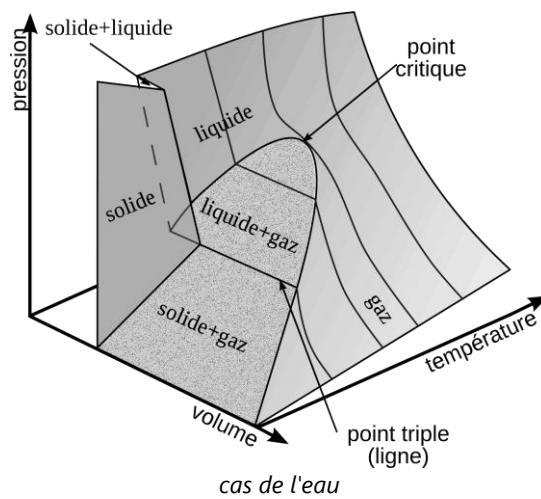
Point critique
 $T_C = 304,2$ K (soit $\approx 31,1$ °C)
 $p_C = 7,38$ MPa (soit ≈ 74 bar)

Point triple
 $T_T = 216,5$ K (soit $\approx -56,6$ °C)
 $p_T = 517$ kPa (soit $\approx 5,2$ bar).

◇ *complément : surface d'équilibre, diagramme (p,V,T)*



cas général



cas de l'eau